



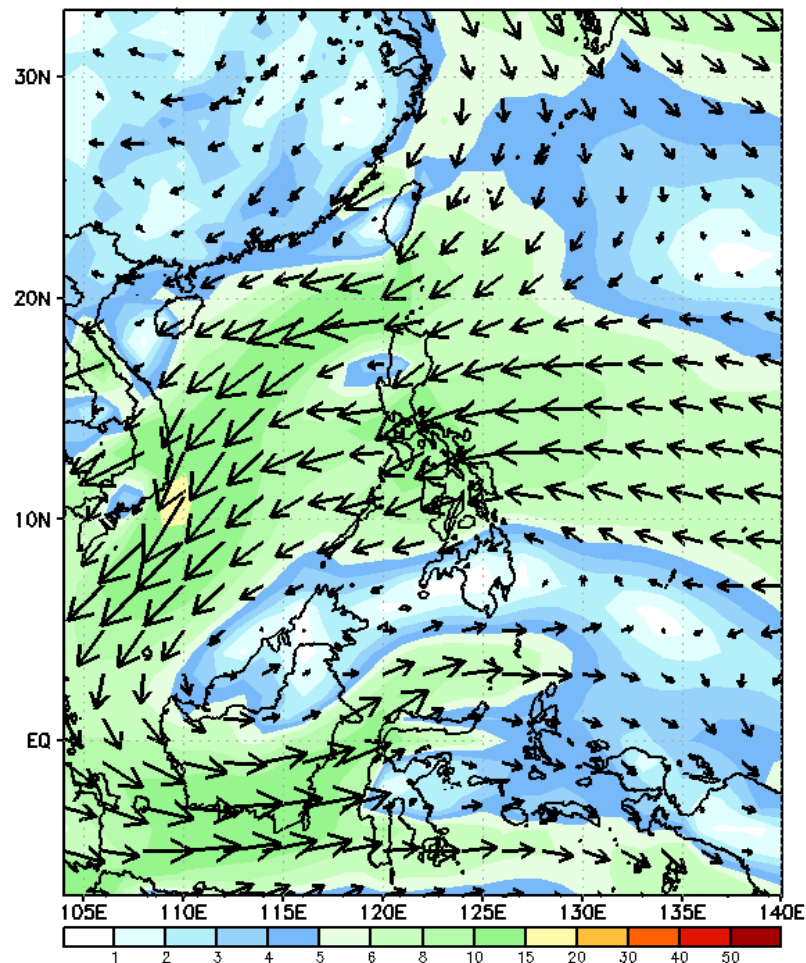
Week 1 & Week 2 Forecast for the Philippines using GEFS Model



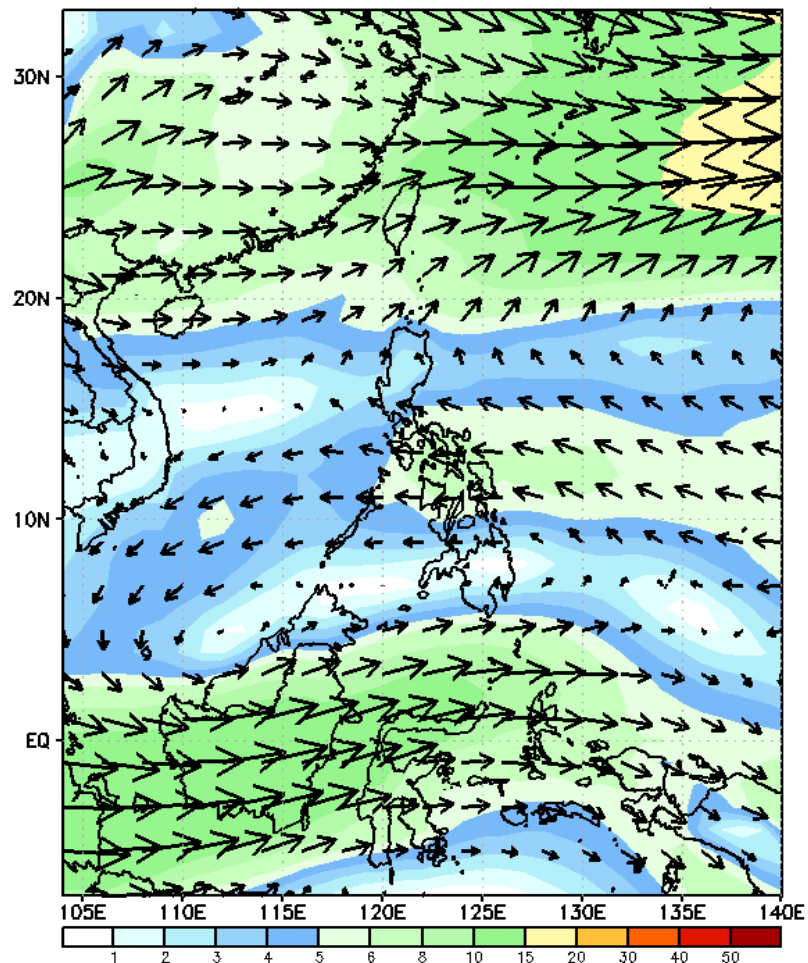
GEFS Week-1 Wind Forecasts:

Week 1: Dec 18-24, 2024

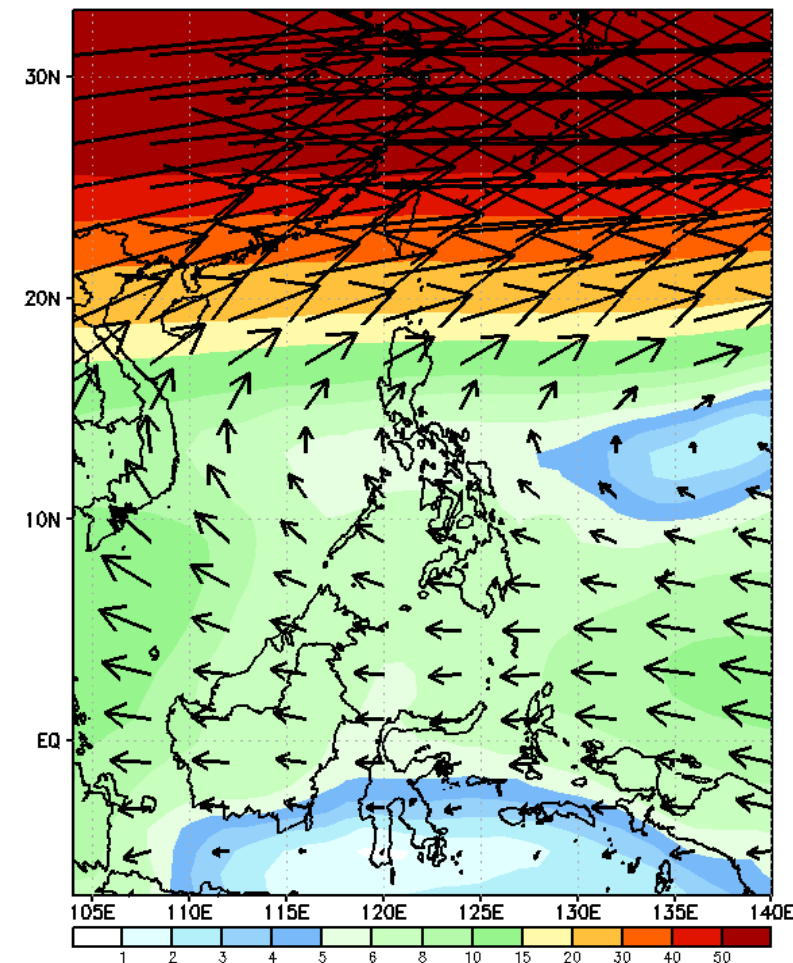
GEFS Week-1 850-hPa Wind Total
Valid: 20241218 - 20241224



GEFS Week-1 700-hPa Wind Total
Valid: 20241218 - 20241224

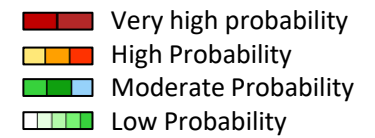


GEFS Week-1 200-hPa Wind Total
Valid: 20241218 - 20241224



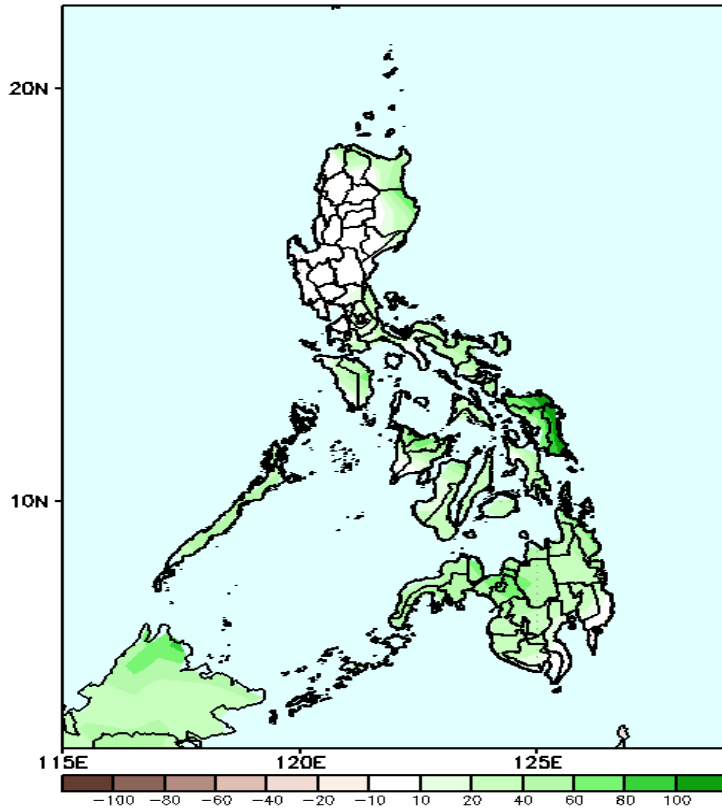
Northeast Monsoon affecting Northern Luzon while Easterlies affecting the rest of the country during the forecast period

Precipitation Anomaly and Exceedance Probability > 25/50 mm



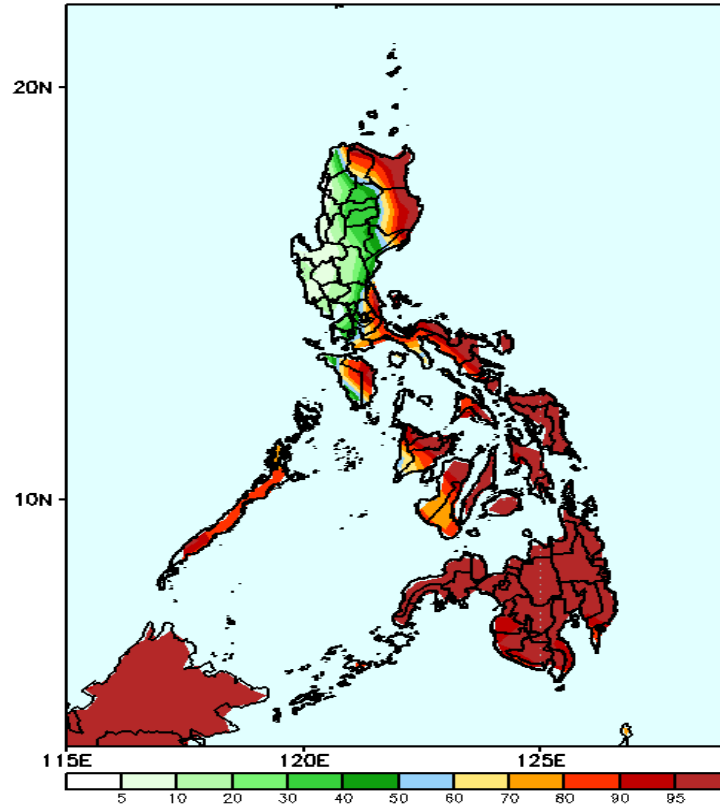
Week 1: Dec 18-24, 2024

GEFS Week-1 Precip Anomaly
Valid: 20241218 - 20241224



Increase of Rainfall of up to 80mm in Samar provinces; 20-100mm in most parts of the country.

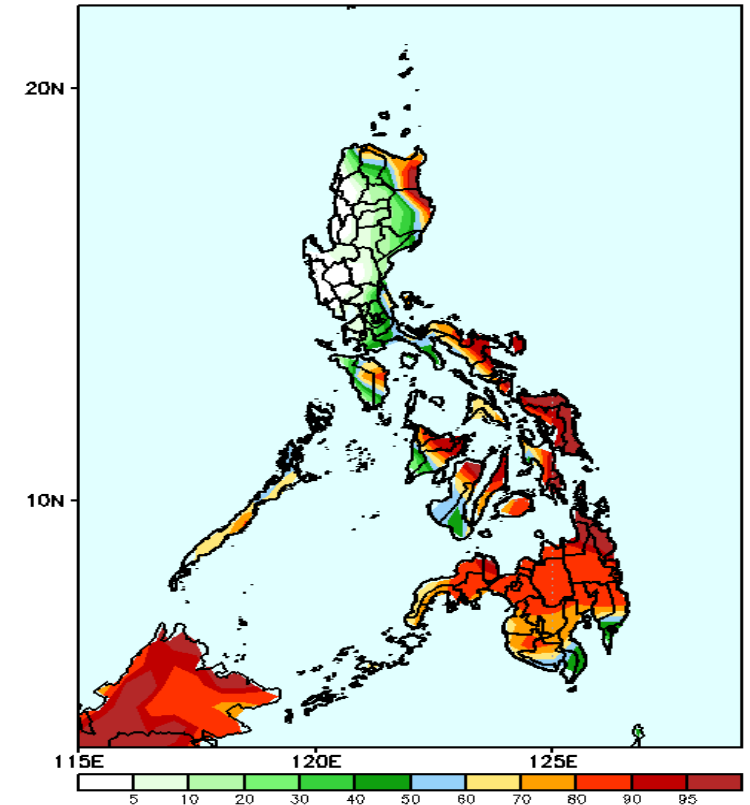
GEFS Week-1 Exceedance Prob. > 25mm
Valid: 20241218 - 20241224



Probability to Exceed 25mm

- High to very high over most of Eastern Luzon, Palawan, Palawan and most of Visayas and Mindanao;
- Moderate to high over Aurora, Occidental Mindoro and Antique;
- Low to moderate over the rest of Luzon.

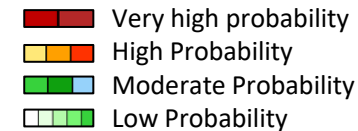
GEFS Week-1 Exceedance Prob. > 50mm
Valid: 20241218 - 20241224



Probability to Exceed 50mm

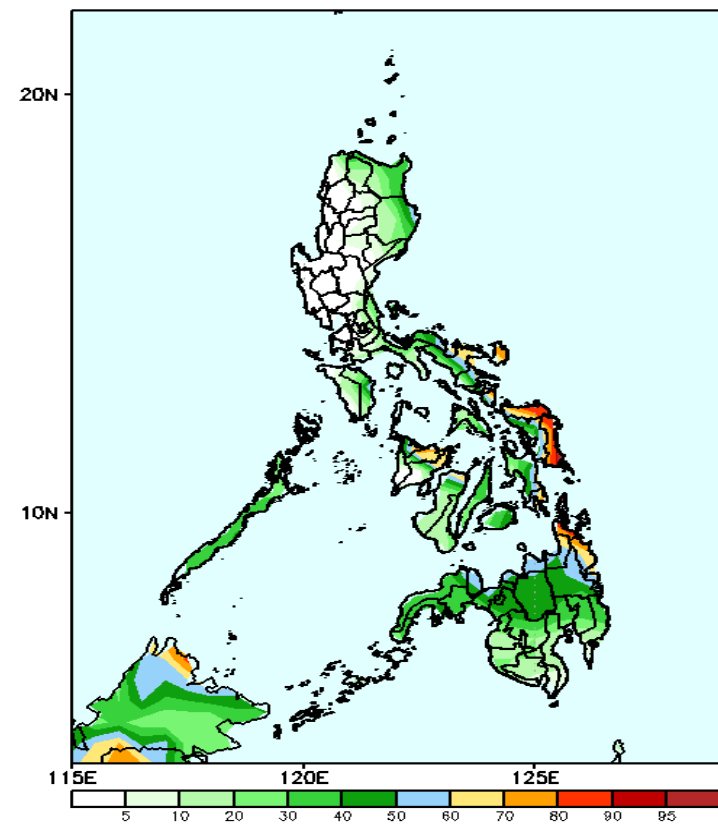
- High to very high over the easternmost portions of Cagayan and Isabela, Bicol Region, Central and Eastern Visayas, and Eastern Mindanao;
- Moderate to high over Batanes, the northern part of Apayao, the rest of Cagayan, rest of Eastern Isabela, MIMAROPA, the rest of Visayas and Mindanao;
- Low to moderate over the rest of Southern Luzon;
- Low over the rest of Luzon.

Exceedance Probability > 100/150/200 mm



Week 1: Dec 18-24, 2024

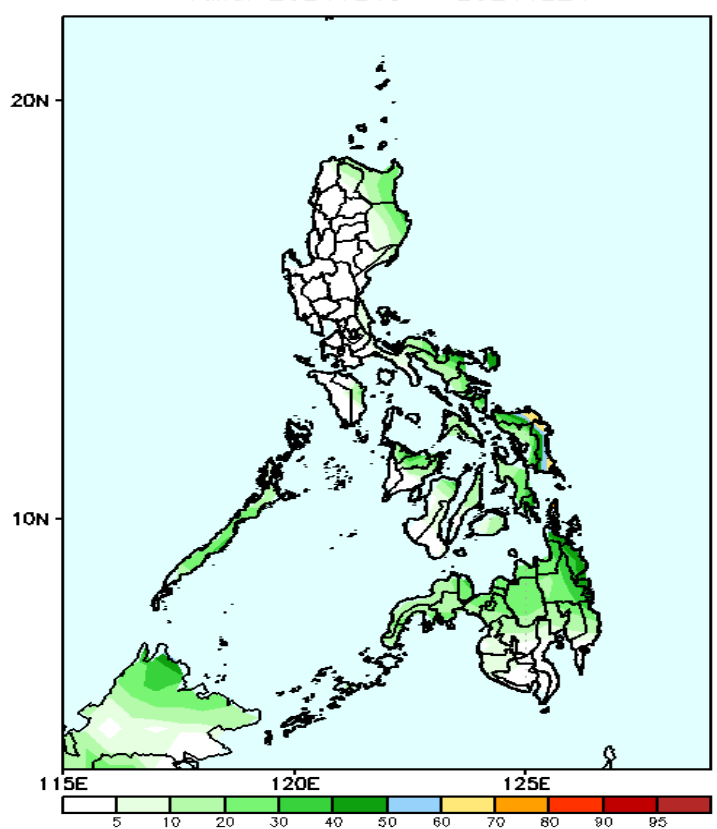
GEFS Week-1 Exceedance Prob. > 100mm
Valid: 20241218 - 20241224



Probability to Exceed 100mm

- Moderate to high over Bicol Region, most of Eastern Visayas, northern part of Panay and Negros Occidental and Surigao Provinces;
- Low to moderate over the rest of Eastern and Southern Luzon, Visayas and Mindanao;
- Low over the rest of Luzon.

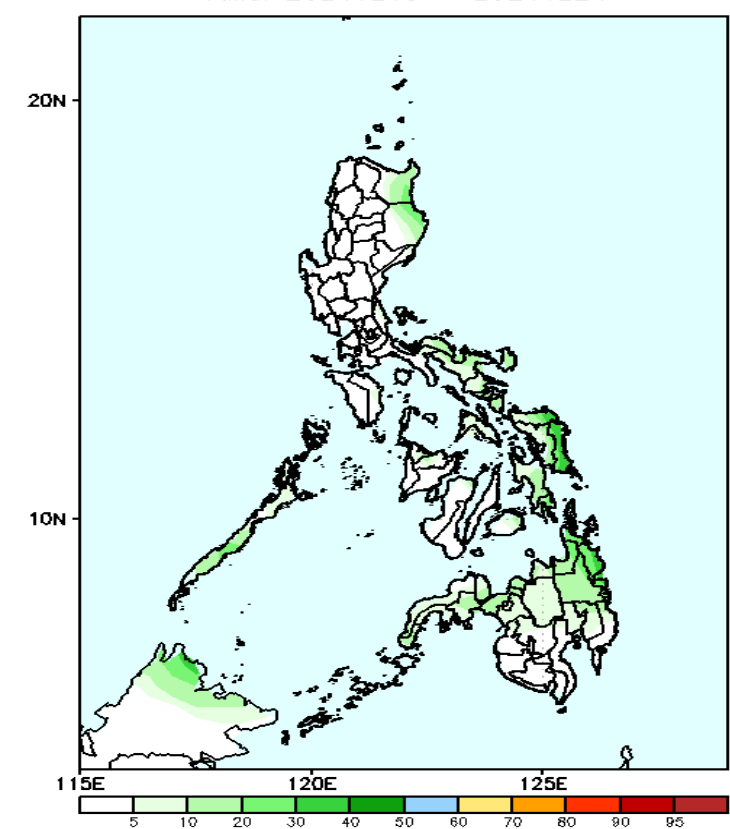
GEFS Week-1 Exceedance Prob. > 150mm
Valid: 20241218 - 20241224



Probability to Exceed 150mm

- Moderate to high over Samar Provinces;
- Low to moderate over Bicol Region, the rest of Eastern Visayas and Caraga.
- Low over the rest of the country.

GEFS Week-1 Exceedance Prob. > 200mm
Valid: 20241218 - 20241224



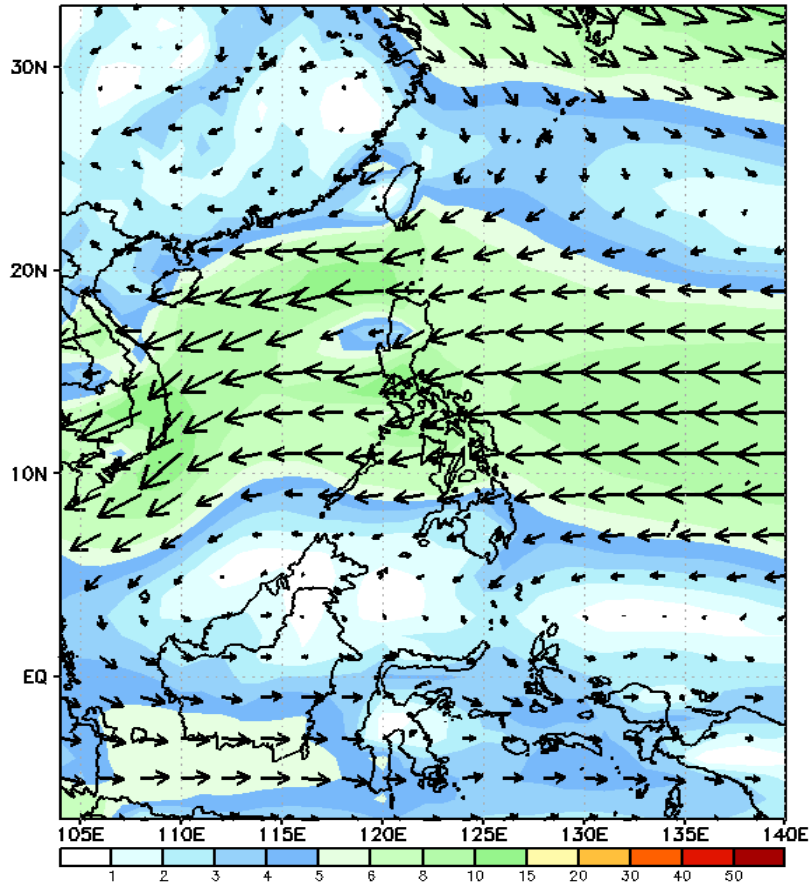
Probability to Exceed 200mm

- Low across the country.

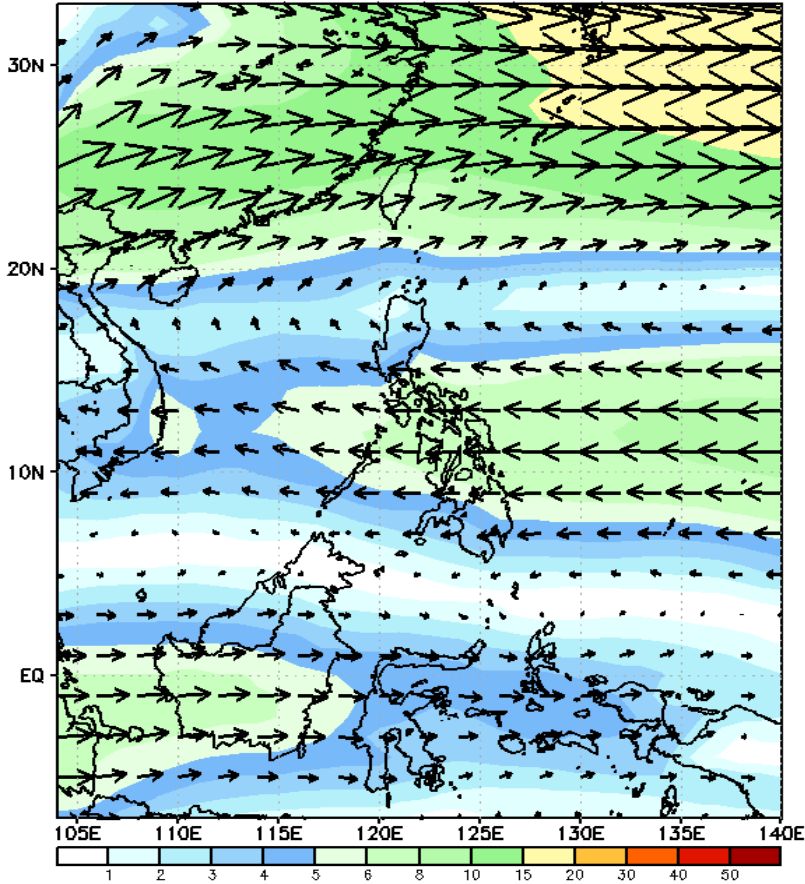
GEFS Week-2 Wind Forecasts:

Week 2: Dec 25-31, 2024

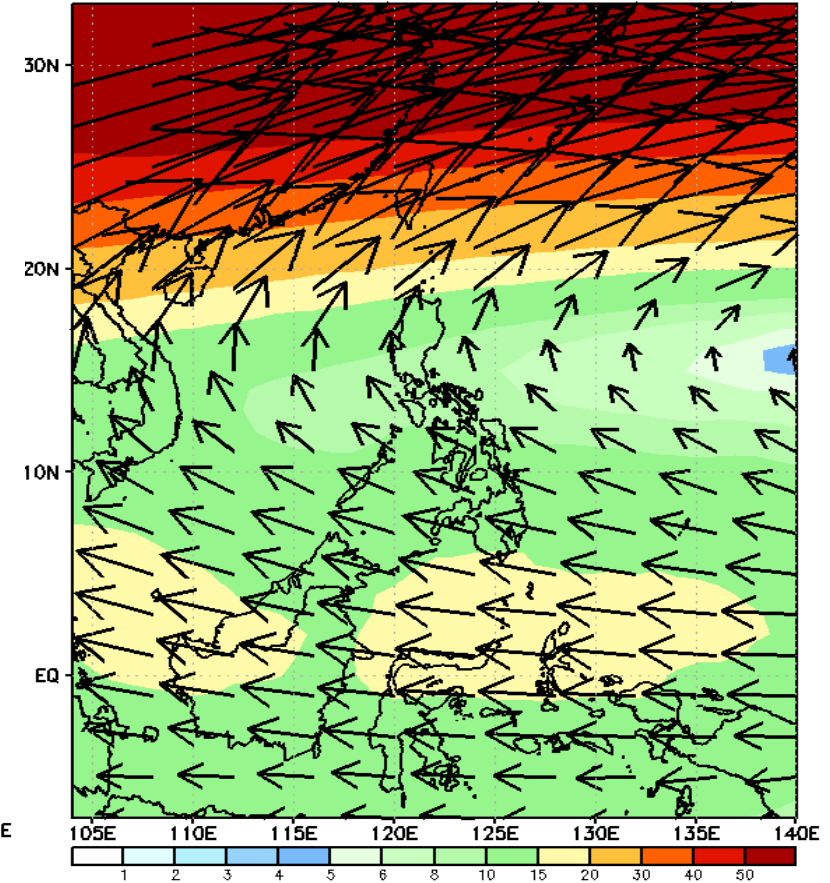
GEFS Week-2 850-hPa Wind Total
Valid: 20241225 - 20241231



GEFS Week-2 700-hPa Wind Total
Valid: 20241225 - 20241231

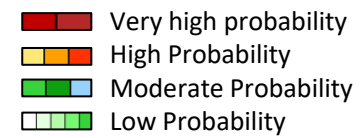


GEFS Week-2 200-hPa Wind Total
Valid: 20241225 - 20241231



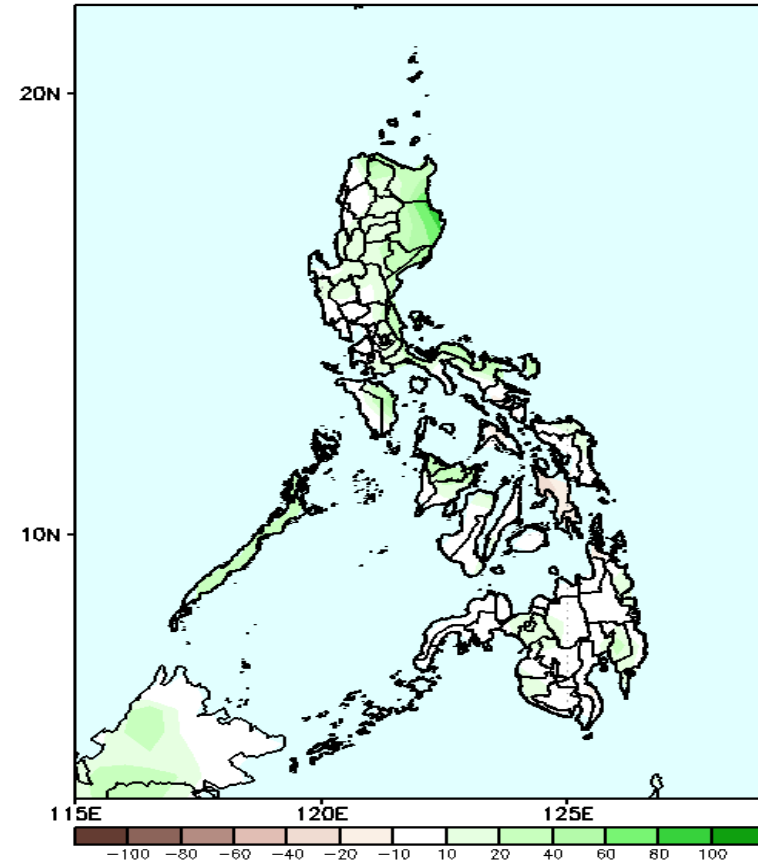
Northeast Monsoon will likely affect Extreme Northern Luzon while Easterlies will likely affect the rest of the country during the forecast period

Precipitation Anomaly and Exceedance Probability > 25/50 mm



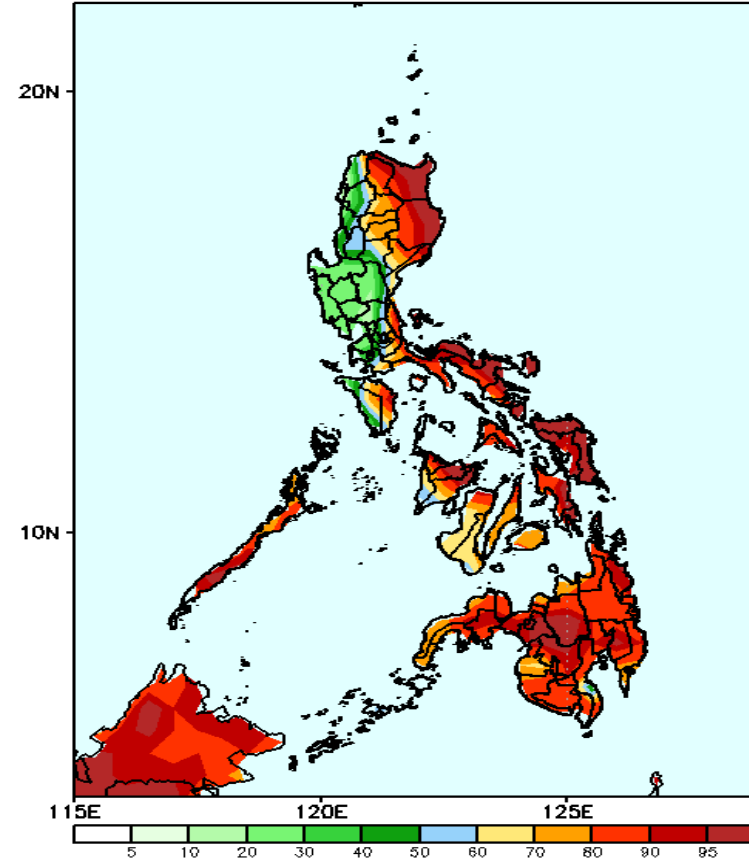
Week 2: Dec 25-31, 2024

GEFS Week-2 Precip Anomaly
Valid: 20241225 - 20241231



Increase of Rainfall of 20-60mm is most likely in most parts of the country.

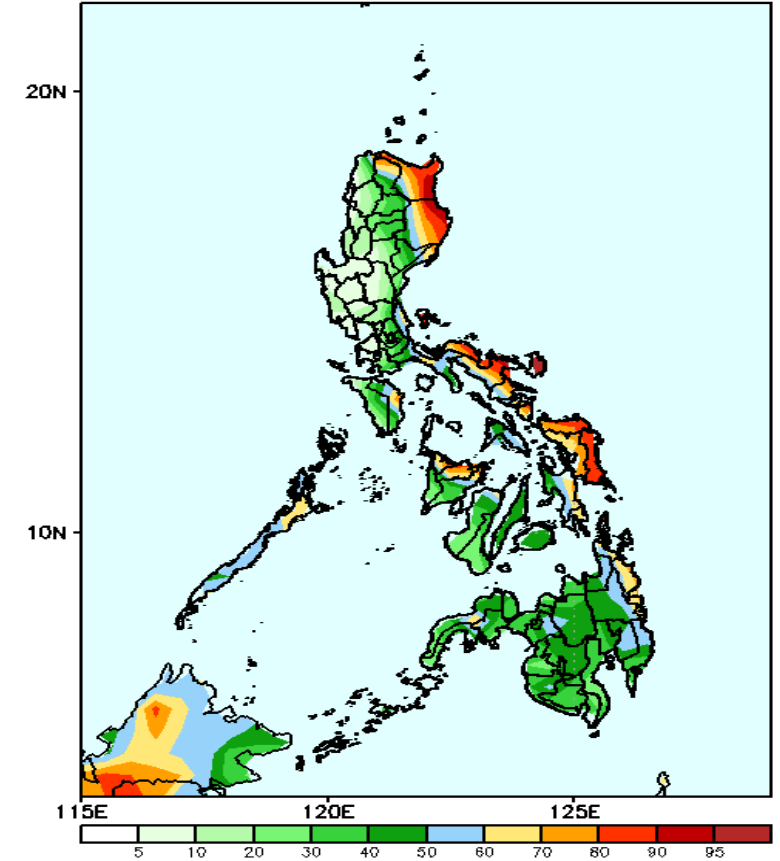
GEFS Week-2 Exceedance Prob. > 25mm
Valid: 20241225 - 20241231



Probability to Exceed 25mm

- High to very high over most of Eastern Luzon, Palawan, Palawan and most of Visayas and Mindanao;
- Moderate to high over Aurora, Occidental Mindoro, Antique western part of Iloilo and Negros Provinces;
- Low to moderate over the rest of Luzon.

GEFS Week-2 Exceedance Prob. > 50mm
Valid: 20241225 - 20241231

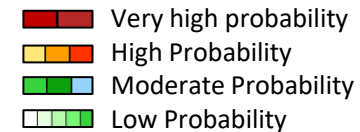


Probability to Exceed 50mm

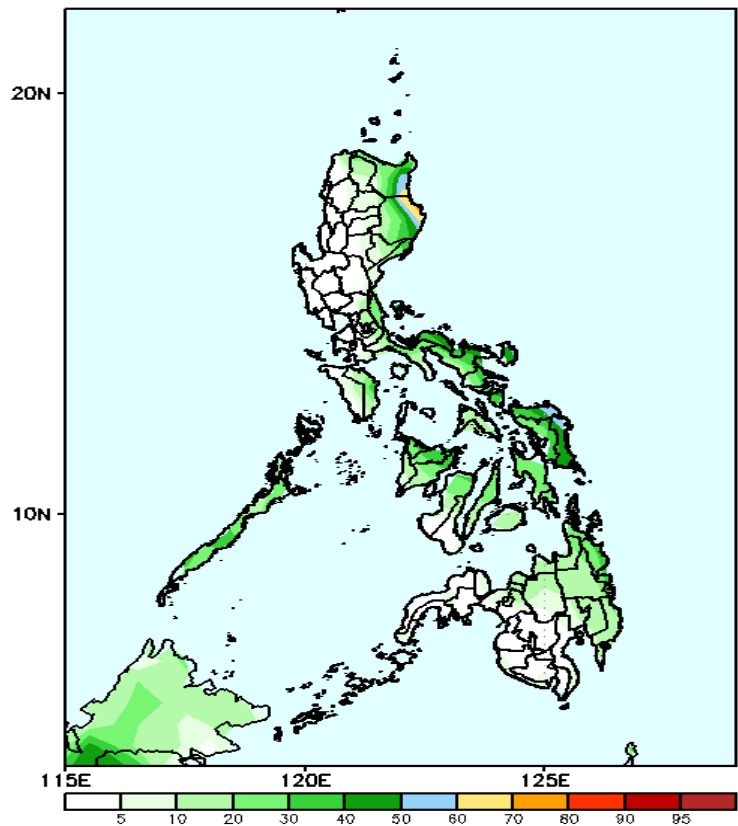
- High to very high over Batanes, the easternmost portions of Cagayan and Isabela and Catanduanes;
- Moderate to high over Apayao, the rest of Cagayan Valley, portions of Aurora and Quezon, Bicol Region, most of MIMAROPA, northern part of Panay and Negros Occidental, most of Eastern Visayas and Mindanao;
- Low to moderate over the rest of CAR, Southern Luzon and Visayas;
- Low over the rest of Luzon.

Exceedance Probability > 100/150/200 mm

Week 2: Dec 25-31, 2024



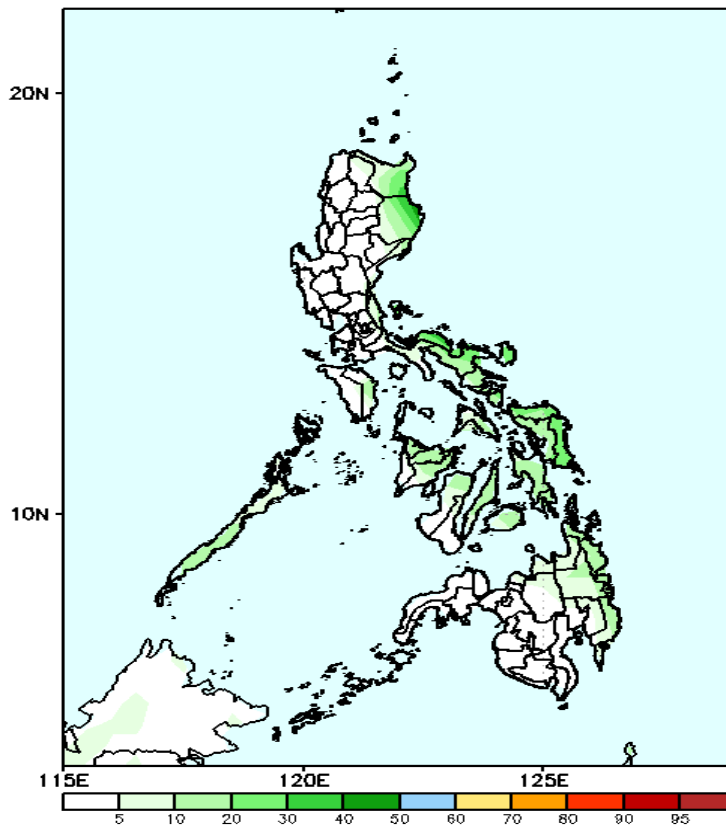
GEFS Week-2 Exceedance Prob. > 100mm
Valid: 20241225 - 20241231



Probability to Exceed 100mm

- Moderate to high over the eastern part of Cagayan and Isabela;
- Low to moderate of the rest of Eastern Luzon, and most of Eastern Visayas and Mindanao;
- Low over the rest of the country.

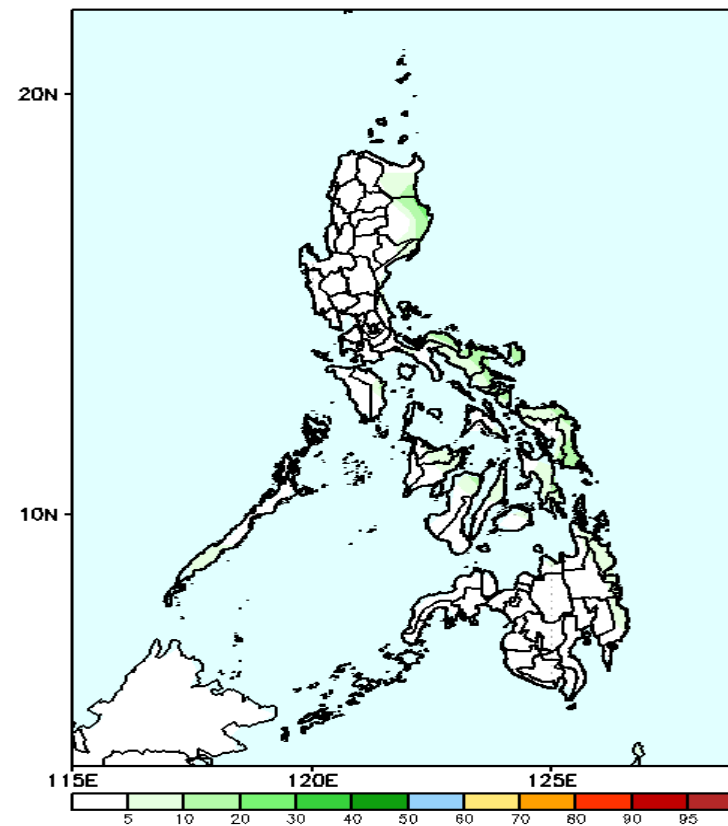
GEFS Week-2 Exceedance Prob. > 150mm
Valid: 20241225 - 20241231



Probability to Exceed 150mm

- Moderate over the eastern sections of Luzon and Visayas;
- Low over the rest of the country.

GEFS Week-2 Exceedance Prob. > 200mm
Valid: 20241225 - 20241231

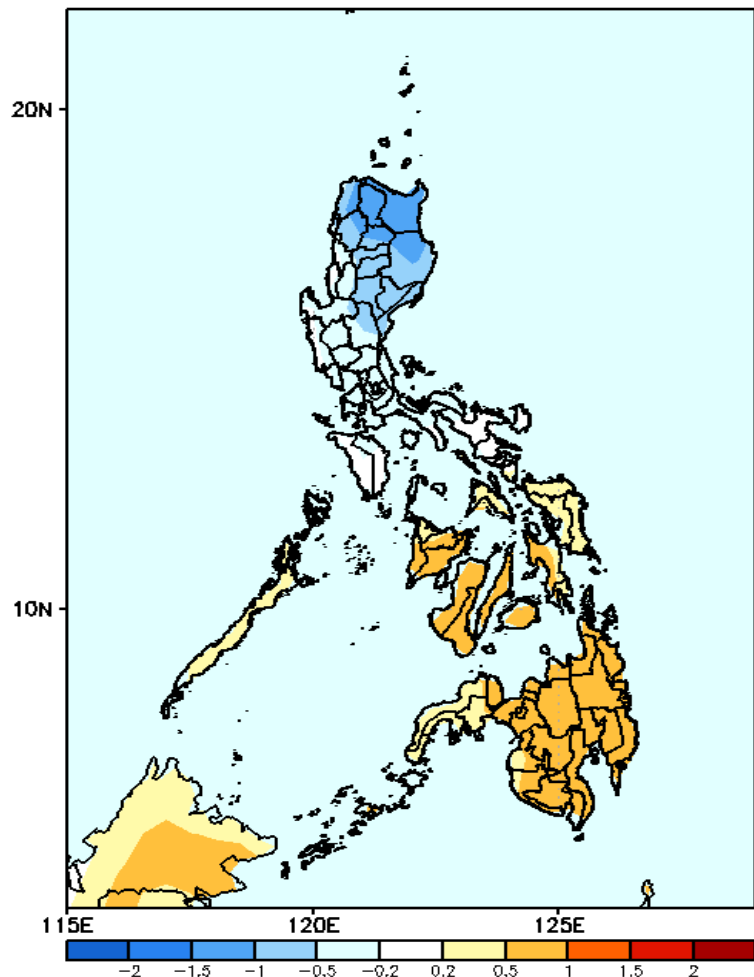


Probability to Exceed 200mm

- Low across the country.

GEFS Week-1 & 2 Forecasts: T2m Anomaly

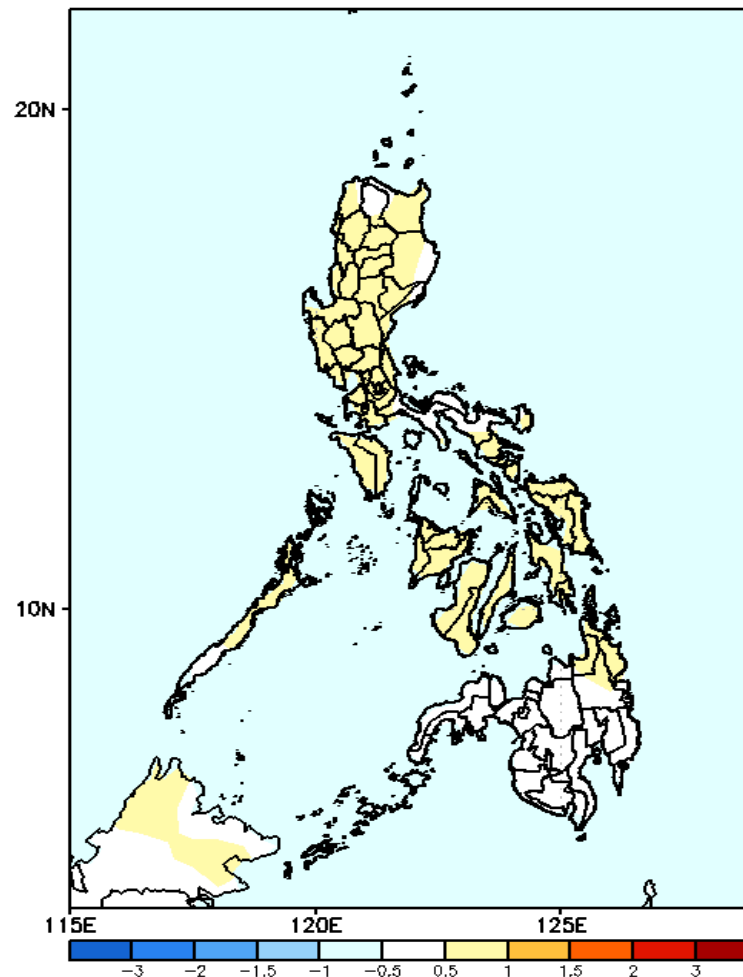
GEFS Week-1 T2m Anomaly
Valid: 20241218 - 20241224



2m Temperature Week 1: Dec 18-24, 2024

Near to slightly warmer than average surface air temperature will likely be experienced in most parts of Northern and Central Luzon while slightly warmer than average surface air temperature over Visayas and Mindanao is expected.

GEFS Week-2 T2m Anomaly
Valid: 20241225 - 20241231



2m Temperature Week 2: Dec 25-31, 2024

Near to slightly warmer than average surface air temperature will likely be experienced in most parts of the country.